



COMPANY PROFILE



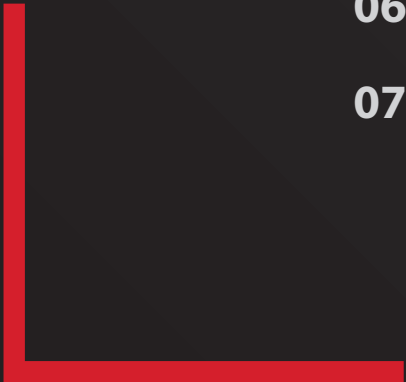

**WE SHAPE OUR
BUILDINGS,
THEREAFTER
THEY SHAPE US**

~ WINSTON CHURCHILL





INDEX

- 01.** Overview
 - 02.** Site Selection
 - 03.** Approvals
 - 04.** Design
 - 05.** Specialised Services
 - 06.** Construction
 - 07.** Contact
- 
- 



OVERVIEW

BioWhip constructs upper class residential dwellings for coinsures that want all the luxury and functionality of opulent living under one roof.

SITE SELECTION





- **AVAILABILITY OF SERVICES**
 - WATER, SEWER AND ELECTRICITY
- **VACANT LAND**

- **DEMOLISHING OF EXISTING INFRASTRUCTURE TO MAKE SPACE FOR THE NEW**



- **BUILDING RESTRICTIONS**





APPROVALS



• PLAN

• RE-ZONING



• RELAXATION OF BUILDING CONSTRAINTS
(BOUNDARIES, SERVITUDES, HEIGHT ETC.)



DESIGN





• ARCHITECTURAL LAY-OUTS, SECTIONS

• ARTIST IMPRESSIONS





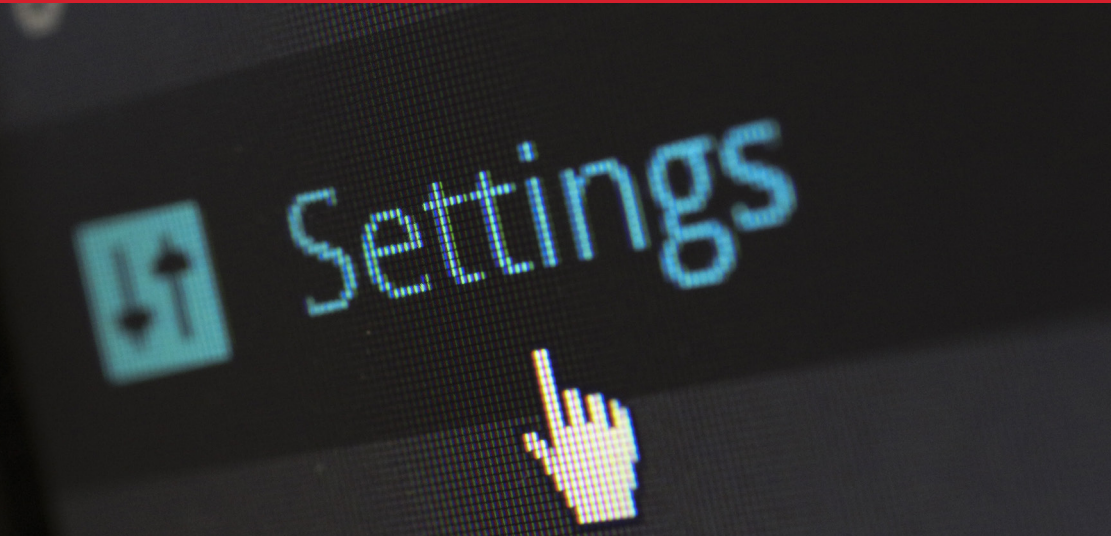
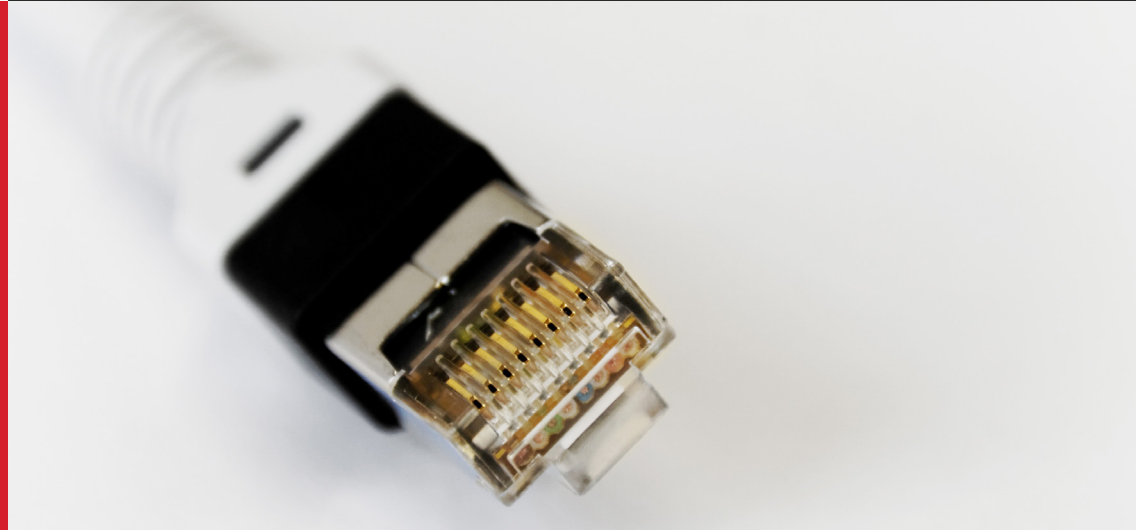
SPECIALISED SERVICES



- CCTV
- ELECTRIC FENCING



- INTERNET CONNECTIVITY



- HOME AUTOMATION

CONSTRUCTION





- **LAYER WORKS**
- **STORM WATER**
- **CONCRETE WORKS**
- **PAVING AND ACCESS ROADS**
- **PILING**

- **BRICK LAYING**
- **UTILITY SUPPLY (WATER, SEWER AND ELECTRICITY)**
- **PRECAST AND INSITU SLABS**
- **STEEL WORK**



- **PLUMBING**
- **GAS**
- **ELECTRICAL**
- **CARPENTRY**





LUXURY SPA DEVELOPMENT

BioWhip has been involved in 5 of the countris top Spa developments including Ruimsig Country Spa that was awarded "Spa Destination of the Year". Not bound to Gauteng, BioWhip has Spa developments as far as Mossel Bay and Cape Town.

- Mt Bijoux - Cape Tiwn
- Avondans - Mossel Bay
- Black Eagle - Gauteng
- Hole in One - Gauteng
- Ruimsig Country Spa



ADDRESS

26 Francis Road
Northvale
Krugersdorp
1739

CONTACT INFORMATION

011 956 3011
071 443 9526

www.elsologix.co.za
info@elsologix.co.za